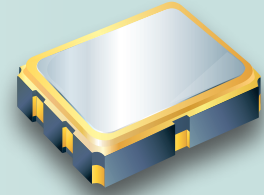


SMD LVPECL VCXO - Differential Output 3.2 x 2.5 x 0.95 mm DJ Series

Features

- Voltage Controlled Crystal Oscillator (VCXO).
- Fundamental solution.
- LVPECL output, output frequencies 50 MHz to 200 MHz.
- Excellent low phase noise and jitter.
- Tri-State function available.
- Applications : SDH / SONET, Ethernet, Base Stations.
- RoHS Compliant / Pb Free.

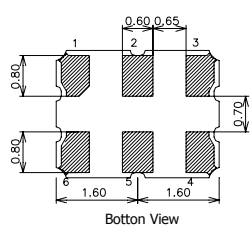
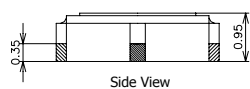
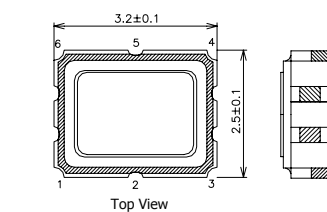


Electrical Specifications

Item / Type	DJ
Output Type	LVPECL
Output Load	50 Ω to VDD - 2V
Oscillation Mode	Fundamental
Supply Voltage (VDD)	3.3 V
Frequency Range	50 ~ 200 MHz
Operating Temperature Range	- 10 ~ + 70 °C , - 40 ~ + 85 °C , or specify
Storage Temperature Range	- 55 ~ + 125 °C
Voltage Vol (Max.) / Voh (Min.)	VDD - 1.62 V / VDD - 1.025 V
Rise (Tr) / Fall (Tf) Time (20 % ~ 80 %)	1 nS Max.
Supply Current	80 mA
Symmetry	45 ~ 55 %
Start-up Time	10 mS Max.
Absolute Pulling Range (APR) *	± 50 ppm Min. , or specify
Nominal Control Voltage	0.5 VDD
Control Voltage Range	0 ~ VDD
Linearity	10 % Max.
Phase Jitter (12 KHz ~ 20 MHz)	1 pS Max.

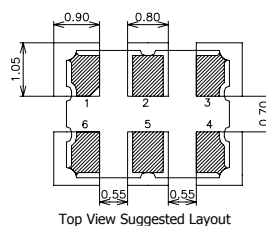
* APR=(Pull Range) - (Frequency tolerance at 25 °C, variation over temperature, supply voltage, and aging.)

Dimensions



PAD FUNCTION:

- 1: CONTROL VOLTAGE
- 2: ENABLE CONTROL or NC
- 3: GND
- 4: OUT
- 5: NC
- 6: VDD



Units: mm